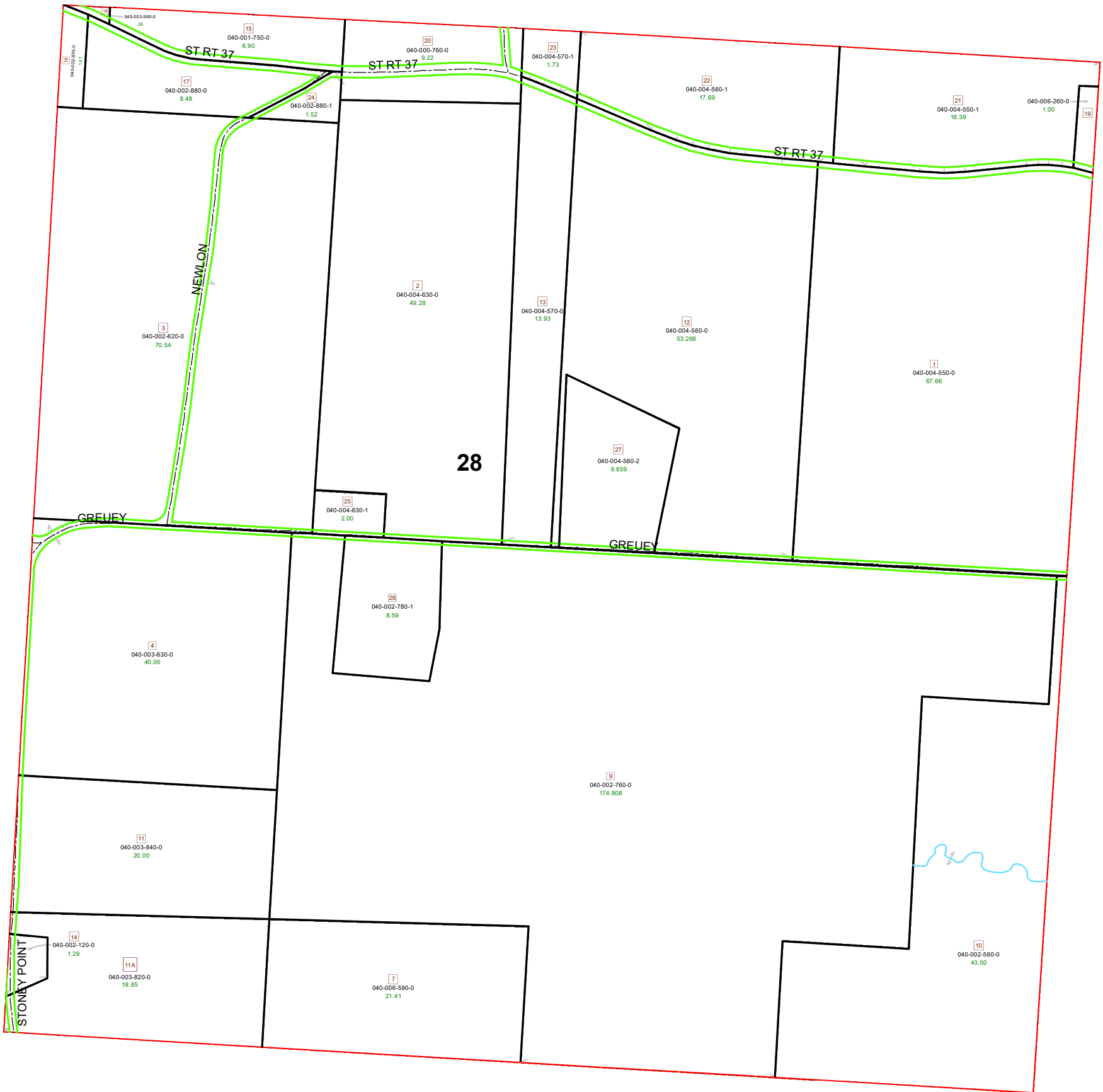


# DEERFIELD TOWNSHIP SECTION 28 R13 TWP 9 MORGAN COUNTY, OH

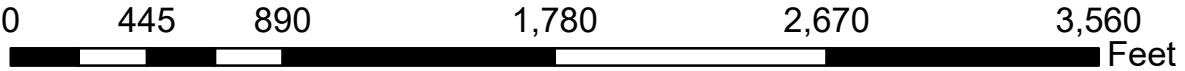


PIN	VOL	PAGE	Owner	LegalDescr	Acres
040-004-560-2	OR214	1505	AZBELL DUSTIN J & JENNIFER A	R13 T09 S28 SD 27	9.859
040-003-990-0	D.V	201	680 CLEMENS FARMS INC	R13 T09 S28 SD 16	0.255
040-004-550-0	OR57	462	COSGRAVE REBECCA SUE REED	R13 T09 S28 SD 1	67.657
040-004-630-1	OR58	1	HANSON TRICIA J & KEVIN B	R13 T09 S28 SD 25	2
040-004-630-0	OR233	2573	HANSON TRICIA J & KEVIN B	R13 T09 S28 SD 2	49.284
040-002-880-1	OR34	599	HITE SUSAN	R13 T09 S28 SD 24	1.523
040-001-750-0	D.V	196	546 INMAN WILLIAM A	R13 T09 S28 SD 15	6.9
040-002-120-0	D.V	190	231 JORDAN RONALD & MANUELA A	R13 T09 S28 SD 14	1.278
040-002-620-0	OR204	226	LAPP THADDEUS & EDITH	R13 T09 S28 SD 3 S	70.535
040-002-780-1	OR141	2	LUMBATIS JASON A & AMY R	R13 T09 S28 SD 26	8.59
040-002-880-0	OR165	253	MARSHALL MARION A & BONNIE L	R13 T09 S28 SD 17	8.477
040-002-870-0	OR165	253	MARSHALL MARION A & BONNIE L	R13 T09 S28 SD 18	1.47
040-003-820-0	D.V	146	223 ORR RUTH N & FRED W	R13 T09 S28 SD 11A	18.85
040-003-840-0	D.V	146	223 ORR RUTH N & FRED W	R13 T09 S28 SD 11 E	20
040-003-830-0	D.V	146	223 ORR RUTH N & FRED W	R13 T09 S28 SD 4 E	40
040-006-590-0	OR229	1	PALMER MATTHEW CORY & AMANDA JO	R13 T09 S28 SD 7 S	21.412
040-006-260-0	OR232	3142	PATTERSON JOHN & HAYLEY HOOK	R13 T09 S28 SD 19 E	1
040-000-760-0	OR234	1616	PATTERSON TIMOTHY J & BETH A PIERCE	R13 T09 S28 SD 20 E	9.215
040-004-550-1	OR204	2714	REED CLAIR L & PHYLLIS M REV TRUST	R13 T09 S28 SD 21	16.386
040-004-560-1	OR204	2714	REED CLAIR L & PHYLLIS M REV TRUST	R13 T09 S28 SD 22	17.694
040-004-570-1	OR200	734	REED CLAIR L & PHYLLIS M REV TRUST	R13 T09 S28 SD 23	1.729
040-004-570-0	OR57	469	REED HOWELL EVERETT	R13 T09 S28 SD 13	13.931
040-004-560-0	OR57	469	REED HOWELL EVERETT	R13 T09 S28 SD 12	53.2694
040-002-560-0	OR223	1548	WISEMAN RUSSELL E & DEE ANN	R13 T09 S28 SD 10	43
040-002-760-0	OR213	3010	WISEMAN RUSSELL EUGENE & DEE ANN	R13 T09 S28 SD 9 S	174.808

**Boundaries**

**Type**

Future Split	Parcel
Hydro	ROW
County	Section
Lot	Township
	Symbols
	Roads



Source: Morgan County Engineer's Office  
 Author: Marcia Wolfe  
 Date: 5/22/2020



Disclaimer: The information that these maps contains is for reference purposes only. Please bring any errors to the attention of the Engineer's Office staff.  
 Thank you